

Contract No. HK/2009/01

Contract Title : Wan Chai Development Phase II - Central - Wan Chai Bypass at HKCEC

Working Programme for Marine Works (Dredging and Backfilling)

ACTIVITY	START	FINISH	2010												2011												2012												2013																						
			Feb	Mar	Apr	May	Jun	Jul	Aug	Sep	Oct	Nov	Dec	Jan	Feb	Mar	Apr	May	Jun	Jul	Aug	Sep	Oct	Nov	Dec	Jan	Feb	Mar	Apr	May	Jun	Jul	Aug	Sep	Oct	Nov	Dec	Jan	Feb	Mar	Apr	May	Jun	Jul	Aug	Sep	Oct	Nov	Dec												
Submissions before Works Commencement																																																													
Submit silt curtain deployment plan	31/3/10	31/3/10	◆																																																										
Submit silt screen deployment plan	31/3/10	31/3/10	◆																																																										
Submit measures to mitigate noise impact	31/3/10	31/3/10	◆																																																										
Cross Harbour Watermains from WCN to TST (DP6)																																																													
Trench dredging for marine watermains installation	29/4/10	28/10/10				■																																																							
Backfilling for watermain	28/1/11	14/12/11													■																																														
Reclamation Works at HKCEC Water Channel (DP3)																																																													
Dredging at HKCEC Water Channel (Western Part)	1/6/10	1/8/10				■																																																							
Backfilling to +3.5mPD (Western Part)	17/8/10	6/2/11							■																																																				
Dredging at HKCEC Water Channel (Middle Part)	2/8/10	6/1/11							■																																																				
Backfilling to +3.5mPD (Middle Part)	21/2/11	1/6/11													■																																														
Dredging at HKCEC Water Channel (Eastern Part)	1/12/12	31/12/12																																					■																						
Backfilling to +3.5mPD (Eastern Part)	16/1/13	30/4/13																																					■																						

**Dredging & Reclamation Works Programme Summary
(based on Initial Works Programme Rev. 0)**

ID	Task Name	Duration	Start	2010 2011 2012 2013 2014 2015																							
				Q4	Q1	Q2	Q3	Q4	Q1	Q2	Q3	Q4	Q1	Q2	Q3	Q4	Q1	Q2	Q3	Q4	Q1	Q2	Q3	Q4			
1	HK/2009/02-Marine & Reclamation Works	2008 d	Thu 28/1/10	[Summary bar from Q4 2009 to Q4 2015]																							
2	Contract Commencement	0 d	Thu 28/1/10	[Milestone diamond at start of Q4 2009]																							
3	General	1879 d	Mon 22/2/10	[Summary bar from Q1 2010 to Q4 2015]																							
4	Submission & obtain approval for marine GI	21 d	Mon 22/2/10	[Task bar from Q1 2010 to Q1 2010]																							
5	Stage 1 Marine GI for reclamation	30 d	Mon 15/3/10	[Task bar from Q1 2010 to Q2 2010]																							
6	Engineer's Design review for Dredging of WCR1, WCR2 & WCR4	30 d	Mon 22/3/10	[Task bar from Q2 2010 to Q3 2010]																							
7	Relocation of New Star Ferry Pier	0 d	Tue 18/3/14	[Milestone diamond at start of Q3 2014]																							
8	Demolition of Existing Star Ferry Pier	100 d	Tue 18/3/14	[Task bar from Q3 2014 to Q4 2014]																							
9	Stage 2 Marine GI for Reclamation	14 d	Tue 18/3/14	[Task bar from Q3 2014 to Q3 2014]																							
10	Engineer's Design review for Dredging of WCR3	21 d	Tue 25/3/14	[Task bar from Q3 2014 to Q4 2014]																							
11	Complete Diversion of Hung Hing Road Traffic Back to Original	20 d	Fri 6/2/15	[Task bar from Q4 2014 to Q1 2015]																							
12	Excavate & remove top of d-wall for permanent seawall construction	50 d	Wed 25/2/15	[Task bar from Q1 2015 to Q2 2015]																							
13	Submarine Outfall	500 d	Tue 21/9/10	[Summary bar from Q3 2010 to Q4 2011]																							
14	Dredging, Laying and Backfilling of Submarine Outfall Pipe at Sea	500 d	Tue 21/9/10	[Task bar from Q3 2010 to Q4 2011]																							
15	Phase 1 - WCR1	158 d	Wed 21/4/10	[Summary bar from Q1 2010 to Q2 2010]																							
16	Mobilization of plants	1 d	Wed 21/4/10	[Task bar from Q1 2010 to Q1 2010]																							
17	Seabed dredging	63 d	Wed 21/4/10	[Task bar from Q1 2010 to Q2 2010]																							
18	Bedding Filling and Permanent seawall (precast cassion)	60 d	Tue 22/6/10	[Task bar from Q2 2010 to Q3 2010]																							
19	Bulk reclamation	37 d	Fri 20/8/10	[Task bar from Q3 2010 to Q4 2010]																							
20	Phase 2 - WCR2	149 d	Thu 1/3/12	[Summary bar from Q1 2012 to Q2 2012]																							
21	Mobilization of plants	1 d	Thu 1/3/12	[Task bar from Q1 2012 to Q1 2012]																							
22	Temp seawall and Seabed dredging	77 d	Thu 1/3/12	[Task bar from Q1 2012 to Q2 2012]																							
23	Bulk reclamation	73 d	Wed 16/5/12	[Task bar from Q2 2012 to Q3 2012]																							
24	Phase 3 - TWCR4 & WCR4	98 d	Sat 28/4/12	[Summary bar from Q2 2012 to Q3 2012]																							
25	Mobilization of plants	1 d	Sat 28/4/12	[Task bar from Q2 2012 to Q2 2012]																							
26	Temp Seawall and Seabed dredging	75 d	Sat 28/4/12	[Task bar from Q2 2012 to Q3 2012]																							
27	Bulk & temp reclamation	24 d	Wed 11/7/12	[Task bar from Q3 2012 to Q4 2012]																							
28	Phase 4 - WCR3	294 d	Tue 18/3/14	[Summary bar from Q3 2014 to Q4 2015]																							
29	Mobilization of plants	1 d	Tue 18/3/14	[Task bar from Q3 2014 to Q3 2014]																							
30	Seabed dredging for Permanent Seawall	112 d	Tue 18/3/14	[Task bar from Q3 2014 to Q4 2014]																							
31	Backfill and permanent seawall (precast cassion)	108 d	Tue 8/7/14	[Task bar from Q4 2014 to Q1 2015]																							
32	Bulk reclamation	74 d	Fri 24/10/14	[Task bar from Q1 2015 to Q2 2015]																							
33	Phase 5 - Construct Permanent Seawall Blocks along curved coastline & Remove TWCR4	105 d	Wed 15/4/15	[Summary bar from Q2 2015 to Q4 2015]																							
34	Mobilization of plants	1 d	Wed 15/4/15	[Task bar from Q2 2015 to Q2 2015]																							
35	Dredging and Filling for permanent seawall construction	50 d	Wed 15/4/15	[Task bar from Q2 2015 to Q3 2015]																							
36	Construction of Permanent Seawall Blocks for curved coastline	56 d	Wed 3/6/15	[Task bar from Q3 2015 to Q4 2015]																							
37	Remove temp seawall and reinstate the location of TWCR4	30 d	Mon 29/6/15	[Task bar from Q4 2015 to Q1 2016]																							

Project: Reclamation Works Programme
Date: Tue 9/3/10

Task		Summary		Rolled Up Progress		Project Summary	
Progress		Rolled Up Task		Split		Group By Summary	
Milestone		Rolled Up Milestone		External Tasks		Deadline	

Activity ID	Cal ID	Activity Description	Orig Dur	Early Start	Early Finish	Year																	
						2010	2011	2012	2013	2014	2015	2016	2017										
TCBR1E (TS1 Area)																							
105	1	TCBR1E(TS1)-dredging+rockfill(pre. for seawall)	86	03DEC10*	26FEB11																		
110	1	TCBR1E (TS1)-temporary reclamation	69	28JAN11*	06APR11																		
155	1	TCBR1E (TS1)- removal of temporary reclamation	27	30JAN12*	25FEB12																		
TCBR4																							
100	1	Maintenance dredging for navigation safety for	7	20NOV10*	26NOV10																		
TCBR2 + TCBR3 (TS2 Area)																							
115	1	TCBR2&TCBR3(TS2)- Maintenance dredging for	5	15NOV10*	19NOV10																		
117	1	TCBR2&TCBR3(TS2)-dredge+rockfill seabed	64	16DEC11*	17FEB12																		
120	1	TCBR2&TCBR3(TS2) --temporary reclamation	115	26FEB12*	19JUN12																		
160	1	TCBR2&TCBR3(TS2-removal temporary reclamation	57	18AUG13*	13OCT13																		
TCBR1W (TS4 Area)																							
125	1	TCBR1W(TS4)-dredging+rockfill(pre. for seawall)	40	19DEC10*	27JAN11																		
130	1	TCBR1W(TS4) --temporary reclamation	68	28JAN11	05APR11																		
165	1	TCBR1W(TS4)--removal temporary reclamation	26	27OCT13*	21NOV13																		
TPCWAE																							
135	1	TPCWAE-dredging+rockfill(pre. for seawall)	55	03DEC10*	26JAN11																		
140	1	TPCWAE --temporary reclamation	77	27JAN11	13APR11																		
170	1	TPCWAE--removal temporary reclamation	28	28SEP13*	25OCT13																		
TPCWAW																							
145	1	TPCWAW-dredging+rockfill(pre. for seawall)	47	28OCT13*	13DEC13																		
150	1	TPCWAW --temporary reclamation	83	14DEC13	06MAR14																		
175	1	TPCWAW--removal temporary reclamation	50	02JUL15*	20AUG15																		

 Early Bar
 Progress Bar
 Critical Activity

EP02 CHINA STATE CONSTRUCTION ENGG LTD Sheet 1 of 1
 CONTRACT NO. HY/2009/15: CENTRAL WAN CHAI BYPASS- TUNNEL (CBTS SECTION)

Prepared based on IWP Rev. 0
 Date Prepared: 28 Oct 2010

Act ID	Description	Orig Dur	Early Start	Early Finish	2011												2012												2013					
					JAN	FEB	MAR	APR	MAY	JUN	JUL	AUG	SEP	OCT	NOV	DEC	JAN	FEB	MAR	APR	MAY	JUN	JUL	AUG	SEP	OCT	NOV	DEC	JAN	FEB	MAR			
Section I																																		
Contract Obligation																																		
1000	Commencement of Section I of works	0	20JAN11 *		◆ Commencement of Section I of works																													
Initial Works																																		
1050	Apply Marine notice to Marine Department	30	21JAN11	19FEB11	■ Apply Marine notice to Marine Department (dredg)																													
1060	Apply Marine notice to Marine Dept. Piling	30	18FEB11	19MAR11	■ Apply Marine notice to Marine Dept. Piling																													
1080	Apply FEP under EP356/2009	21	28FEB11	20MAR11	■ Apply FEP under EP356/2009																													
1081	Submission of Works Schedule for FEP	14	05MAR11	21MAR11	■ Submission of Works Schedule for FEP																													
1082	Submission of Location Plan for FEP	14	05MAR11	21MAR11	■ Submission of Location Plan for FEP																													
1083	Submission of Silt Curtain Deployment	14	05MAR11	21MAR11	■ Submission of Silt Curtain Deployment Plan																													
1084	Submission of Silt Screen Deployment Plan	14	05MAR11	21MAR11	■ Submission of Silt Screen Deployment Plan																													
1085	Submission Noise Management Plan	14	05MAR11	21MAR11	■ Submission Noise Management Plan																													
1090	Apply Dumping Permit	30	18FEB11	19MAR11	■ Apply Dumping Permit																													
1100	Apply CNP	30	31JAN11	01MAR11	■ Apply CNP																													
1110	Apply C&D waste disposal	30	20JAN11	18FEB11	■ Apply C&D waste disposal																													
1120	Apply Discharge licence	30	18FEB11	19MAR11	■ Apply Discharge licence																													
1130	Notification of chemical waste Producer	30	20JAN11	18FEB11	■ Notification of chemical waste Producer																													
1140	Notification to Labor Dept-Works Commencement	30	20JAN11	18FEB11	■ Notification to Labor Dept-Works Commencement																													
1150	Submit Risk Ass to MTR	21	28FEB11	20MAR11	■ Submit Risk Ass to MTR																													
1260	Erect Hoarding	30	28FEB11	29MAR11	■ Erect Hoarding																													
1270	Demarcation of Marine Site Boundary	21	01MAR11	21MAR11	■ Demarcation of Marine Site Boundary																													
1280	Working Site Office establishment	14	27JAN11	09FEB11	■ Working Site Office establishment																													
Monitoring																																		
1160	Takeover monitoring system from C1	0	21MAR11 *		◆ Takeover monitoring system from C1																													
1180	Commence Monitoring- ADMS,etc	0	21MAR11		◆ Commence Monitoring- ADMS,etc																													
Dredging Works																																		
1070	Submit Dredging MS	30	18FEB11	19MAR11	■ Submit Dredging MS																													
1075	Acceptance of Dredging MS	0		19MAR11	◆ Acceptance of Dredging MS																													
1078	Initial Hydrographic Survey	1	20MAR11	20MAR11	■ Initial Hydrographic Survey																													
1200	Initial Dredging Works for Piling	15	22MAR11	05APR11	■ Initial Dredging Works for Piling																													
1210	Final Hydrographic survey	3	07MAY12	09MAY12	■ Final Hydrographic survey																													
1220	Final Dredging Works	7	10MAY12	16MAY12	■ Final Dredging Works																													
1230	Confirmation Hydrographic survey	70	17MAY12	25JUL12	■ Confirmation Hydrographic survey																													
Piling Works																																		
1240	Submit stage platform MS	30	10FEB11	11MAR11	■ Submit stage platform MS																													
1250	Submit piling MS	30	10FEB11	11MAR11	■ Submit piling MS																													
P1000	Erect temporary Piling Platform	120	06APR11	03AUG11	■ Erect temporary Piling Platform																													
P1020	Pre-drilling	150	06JUN11	02NOV11	■ Pre-drilling																													
P1040	Bored Piles Construction and Testing	250	06JUL11	11MAR12	■ Bored Piles Construction and Testing																													
P1060	Drive Sheet piles along Bored piles	140	03NOV11	21MAR12	■ Drive Sheet piles along Bored piles																													
P1080	Dismantle Temporary Piling Platform	50	25FEB12	14APR12	■ Dismantle Temporary Piling Platform																													
P1100	Dive sheet piles beyond precast seawall	90	17JAN12	15APR12	■ Dive sheet piles beyond precast seawall																													
P1120	Trim pilehead to cut-off level	210	29SEP11	25APR12	■ Trim pilehead to cut-off level																													
P1140	Cut steel casing of bore piles	210	06OCT11	02MAY12	■ Cut steel casing of bore piles																													
P1160	Cut sheet piles to design level for box units	120	08JAN12	06MAY12	■ Cut sheet piles to design level for box units																													

Start date 20JAN11
 Finish date 19DEC12
 Data date 20JAN11
 Run date 05MAR11
 Page number 1A
 © Primavera Systems, Inc.

Contract no. HK/2010/06
 Wan Chai Development Phase II- Central-Wan Chai By pass over MTR Tsuen Wan Line

GAMMON-LEADER JV

Works Schedule of Marine Works for EP-356/2009

- Early bar
- Progress bar
- Critical bar
- Summary bar
- ◆ Start milestone point
- ◆ Finish milestone point

Activity ID	Activity Name	Rem Dur	Start	Finish	2013																
					August					September				October				November			
					22	29	05	12	19	26	02	09	16	23	30	07	14	21	28	04	11
3MRP - Aug 2013 to Nov 2013																					
02 - PRE-CONSTRUCTION WORKS																					
02.2 - Contractor's Submission																					
0220-1390	Tunnel Structures Materials - ER Approval	0	15-Mar-13 A	25-Jul-13 A	Tunnel Structures Materials - ER Approval																
0220-1400	Tunnel Structures Materials - Procurement & Delivery	9	08-Jul-13 A	28-Aug-13	Tunnel Structures Materials - Procurement & Delivery																
02.3 - Method Statement / Shop Drawings																					
0230-1720	MS Temporary Bridge TA1 - Resubmission	0	08-Jul-13 A	25-Jul-13 A	MS Temporary Bridge TA1 - Resubmission																
0230-1730	MS Temporary Bridge TA1 - ER No Adverse Comment	9	26-Jul-13 A	28-Aug-13	MS Temporary Bridge TA1 - ER No Adverse Comment																
0230-1920	MS Marine Temp Pile Removal - Resubmission	6	20-Aug-13	25-Aug-13	MS Marine Temp Pile Removal - Resubmission																
0230-1930	MS Marine Temp Pile Removal - ER Approval	6	26-Aug-13	31-Aug-13	MS Marine Temp Pile Removal - ER Approval																
0230-1420	MS Permanent Noise Barrier - Submission	28	02-Nov-13	29-Nov-13	MS Permanent Noise Barrier - Submission																
02.4 - Contractor's Design and Build Items																					
0240-1035	Temp Bridge "TA1" Design - ER No Adverse Comment	0	26-Jun-13 A	13-Aug-13 A	Temp Bridge "TA1" Design - ER No Adverse Comment																
0240-1040	Temp Bridge "TA1" - Fabrication	0	26-Jun-13 A	13-Aug-13 A	Temp Bridge "TA1" - Fabrication																
0240-1041	Temp Bridge "TD" Design - Submission	18	01-Mar-13 A	06-Sep-13	Temp Bridge "TD" Design - Submission																
0240-1042	Temp Bridge "TD" Design - ER review and comment	28	07-Sep-13	04-Oct-13	Temp Bridge "TD" Design - ER review and comment																
0240-1043	Temp Bridge "TD" Design - Resubmission	36	05-Oct-13	09-Nov-13	Temp Bridge "TD" Design - Resubmission																
0240-1044	Temp Bridge "TD" Design - ER Approval	28	10-Nov-13	07-Dec-13	Temp Bridge "TD" Design - ER Approval																
0240-1105	Int. Noise Enclosure Structural Design - Submission	0	20-Mar-13 A	19-Aug-13 A	Int. Noise Enclosure Structural Design - Submission																
0240-1110	Int. Noise Enclosure Structural Design - ER Review/Resubmission	48	20-Aug-13	06-Oct-13	Int. Noise Enclosure Structural Design - ER Review/Resubmission																
0240-1112	Int. Noise Enclosure Structural Design - ER Approval	28	07-Oct-13	03-Nov-13	Int. Noise Enclosure Structural Design - ER Approval																
0240-1113	Int. Noise Enclosure Structural Design - Shop Drawings	90	04-Nov-13	01-Feb-14	Int. Noise Enclosure Structural Design - Shop Drawings																
0240-1127	Noise Barrier Design Structural Design - ER Review/Resubmission	2	30-May-13 A	21-Aug-13	Noise Barrier Design Structural Design - ER Review/Resubmission																
0240-1128	Noise Barrier Design Structural Design - ER Approval	28	22-Aug-13	18-Sep-13	Noise Barrier Design Structural Design - ER Approval																
0240-1131	Noise Barrier Design - Procurement/Sub-contractor	60	22-Aug-13	20-Oct-13	Noise Barrier Design - Procurement/Sub-contractor																
0240-1132	Noise Barrier Design - Shop Drawings	90	21-Oct-13	18-Jan-14	Noise Barrier Design - Shop Drawings																
0240-1134	Noise Barrier Panel - Design Submission	60	21-Oct-13	19-Dec-13	Noise Barrier Panel - Design Submission																
0240-1150	Perm. Noise Enclosure Structural Design - Submission	0	20-Mar-13 A	19-Aug-13 A	Perm. Noise Enclosure Structural Design - Submission																
0240-1160	Perm. Noise Enclosure Structural Design - ER Review/Resubmission	48	20-Aug-13	06-Oct-13	Perm. Noise Enclosure Structural Design - ER Review/Resubmission																
0240-1161	Perm. Noise Enclosure Structural Design - Procurement/Sub-contractor	48	17-Sep-13	03-Nov-13	Perm. Noise Enclosure Structural Design - Procurement/Sub-contractor																
0240-1162	Perm. Noise Enclosure Structural Design - ER Approval	28	07-Oct-13	03-Nov-13	Perm. Noise Enclosure Structural Design - ER Approval																
0240-1163	Perm. Noise Enclosure Structural Design - Shop Drawings	90	04-Nov-13	01-Feb-14	Perm. Noise Enclosure Structural Design - Shop Drawings																
02.5 - Bridge Segment/Beam Off-site Precasting																					
0250-1700.09	Bridge Precast Beam Casting Bridge F4 Beam 5-1	0	18-Jul-13 A	30-Jul-13 A	Bridge Precast Beam Casting Bridge F4 Beam 5-1																
0250-1700.10	Bridge Precast Beam Casting Bridge F4 Beam 6-1	14	20-Aug-13	02-Sep-13	Bridge Precast Beam Casting Bridge F4 Beam 6-1																
0250-1700.11	Bridge Precast Beam Casting Bridge E Beam E1D1-A	6	02-Jul-13 A	25-Aug-13	Bridge Precast Beam Casting Bridge E Beam E1D1-A																
0250-1700.21	Bridge Precast Beam Casting Bridge E Beam E1D-B	14	26-Aug-13	08-Sep-13	Bridge Precast Beam Casting Bridge E Beam E1D-B																
0250-1700.31	Bridge Precast Beam Casting Bridge E Beam E1D-C	14	02-Sep-13	15-Sep-13	Bridge Precast Beam Casting Bridge E Beam E1D-C																
0250-1700.41	Bridge Precast Beam Casting Bridge E Beam E2E1-A	14	09-Sep-13	22-Sep-13	Bridge Precast Beam Casting Bridge E Beam E2E1-A																
0250-1700.51	Bridge Precast Beam Casting Bridge E Beam E2E1-B	14	16-Sep-13	29-Sep-13	Bridge Precast Beam Casting Bridge E Beam E2E1-B																
0250-1700.61	Bridge Precast Beam Casting Bridge E Beam E2E1-C	14	23-Sep-13	06-Oct-13	Bridge Precast Beam Casting Bridge E Beam E2E1-C																
0250-1600.12	Bridge D2 Pier D07 Precasting Segment (1-17) - Mould S1	2	29-Jun-13 A	21-Aug-13	Bridge D2 Pier D07 Precasting Segment (1-17) - Mould S1																
0250-1600.13	Bridge D2 Pier D06 Precasting Segment (1-17) - Mould S1	42	22-Aug-13	02-Oct-13	Bridge D2 Pier D06 Precasting Segment (1-17) - Mould S1																
0250-1600.14	Bridge D2 Pier D05 Precasting Segment (1-17) - Mould S1	42	03-Oct-13	13-Nov-13	Bridge D2 Pier D05 Precasting Segment (1-17) - Mould S1																

- Remaining Level of Effort
- Actual Level of Effort
- Actual Work
- Remaining Work
- Critical Remaining Work
- ◆ Milestone

Contract HY/2009/19

Three Month Rolling Programme (20 Aug 2013 to 19 Nov 2013)

3MRP

3MRP - Aug 2013 to Nov 2013

Page 1 of 8

Activity ID	Activity Name	Rem Dur	Start	Finish	2013																
					August					September					October				November		
					22	29	05	12	19	26	02	09	16	23	30	07	14	21	28	04	11
0250-1650.04	Bridge F1 Pier F03 Precasting Segment (1-6) - Mould S2	2	07-Jun-13 A	21-Aug-13	Bridge F1 Pier F03 Precasting Segment (1-6) - Mould S2																
0250-1650.05	Bridge F2 Pier F03 Precasting Segment (1-5) - Mould S2	0	30-Jun-13 A	04-Aug-13 A	Bridge F2 Pier F03 Precasting Segment (1-5) - Mould S2																
0250-1650.16	Bridge F2 Pier F05 Precasting Segment (1-6) - Mould S2	17	04-Aug-13 A	07-Sep-13	Bridge F2 Pier F05 Precasting Segment (1-6) - Mould S2																
0250-1650.17	Bridge D2 Pier D08 Precasting Segment (1-8) - Mould S1	24	08-Sep-13	01-Oct-13	Bridge D2 Pier D08 Precasting Segment (1-8) - Mould S1																
0250-1650.18	Bridge D2 Pier D04 Precasting Segment (1-8) - Mould S2	24	02-Oct-13	25-Oct-13	Bridge D2 Pier D04 Precasting Segment (1-8) - Mould S2																
0250-1650.19	Bridge D1 Pier D04 Precasting Segment (1-8) - Mould S2	24	26-Oct-13	18-Nov-13	Bridge D1 Pier D04 Precasting Segment (1-8) - Mould S2																
0250-1655.014	Bridge F3 - F07 Segment - Pier Segment +2 (3 nos) - Mould T	0	13-Jul-13 A	13-Aug-13 A	Bridge F3 - F07 Segment - Pier Segment +2 (3 nos) - Mould T																
0250-1655.04	Bridge F3 - F06 Segment - Remaining (10 nos) - Mould T	0	21-Jun-13 A	23-Jul-13 A	Bridge F3 - F06 Segment - Remaining (10 nos) - Mould T																
0250-1655.024	Bridge F3 - F07 Segment - Remaining (10 nos) - Mould T	20	17-Aug-13 A	08-Sep-13	Bridge F3 - F07 Segment - Remaining (10 nos) - Mould T																
0250-1655.02	Bridge F3 - F05 Segment - Remaining (4 nos) - Mould T	12	09-Sep-13	20-Sep-13	Bridge F3 - F05 Segment - Remaining (4 nos) - Mould T																
0250-1655.01	Bridge F3 - F05 Segment - Pier Segment +1 (2 nos) - Mould T	9	21-Sep-13	29-Sep-13	Bridge F3 - F05 Segment - Pier Segment +1 (2 nos) - Mould T																
0250-1830	Segment Storage - Portal Gantry Foundation + Rail Stage 3	12	20-Aug-13	02-Sep-13	Segment Storage - Portal Gantry Foundation + Rail Stage 3																
03 - PRELIMINARY WORKS																					
03.3 - Interface Works																					
0330-1110	Submit/Agree FEHD/ER Relocation Sequence & Programme	6	19-Mar-13 A	26-Aug-13	Submit/Agree FEHD/ER Relocation Sequence & Programme																
0330-1200	Agreement of HGHK Interim Temp Carpark	34	20-Jun-13 A	28-Sep-13	Agreement of HGHK Interim Temp Carpark																
0330-1300	Erect Interim Temp Carpark for HGHK	18	17-Oct-13	07-Nov-13	Erect Interim Temp Carpark for HGHK																
05 - SECTION 2 & 2A OF THE WORKS																					
05.1 - Cut & Cover Tunnel Ch 4855-4932 (APS Footprint)																					
05.1.1 - D-Wall Construction																					
0511-1088	Dismantle Bentonite Plant - EVB Area	0	13-May-13 A	02-Aug-13 A	Dismantle Bentonite Plant - EVB Area																
0511-1090	Install Dewatering Well - EVB Area (18 nos.)	30	27-Jun-13 A	24-Sep-13	Install Dewatering Well - EVB Area (18 nos.)																
0511-1091	Install Observation Well - EVB Area (14 nos.)	36	20-Aug-13	02-Oct-13	Install Observation Well - EVB Area (14 nos.)																
0511-1092	Install Recharging Well - EVB Area (6 nos.)	18	03-Jul-13 A	09-Sep-13	Install Recharging Well - EVB Area (6 nos.)																
0511-1095	Install King Post - EVB Area (20 nos.)	42	23-Aug-13	12-Oct-13	Install King Post - EVB Area (20 nos.)																
0511-1100	Pump Test Ch 4855-4932	12	15-Oct-13	28-Oct-13	Pump Test Ch 4855-4932																
05.1.2 - ELS																					
0512-1101	Advance Excav EVB Area 1st Layer + Support	15	29-Oct-13	14-Nov-13	Advance Excav EVB Area 1st Layer + Support																
05.2 - Cut & Cover Tunnel Ch 4932-5149																					
05.2.1 - D-Wall Construction																					
0521-1879	Remove Existing Box Culvert at D-wall Area + Backfill	0	02-Jul-13 A	10-Aug-13 A	Remove Existing Box Culvert at D-wall Area + Backfill																
0521-1880	D-wall N71-N74 Grouting for Existing Seawall Rubble Mound	9	20-Aug-13	29-Aug-13	D-wall N71-N74 Grouting for Existing Seawall Rubble Mound																
0521-1890	D-wall N71-N73 Guide Wall	12	27-Aug-13	09-Sep-13	D-wall N71-N73 Guide Wall																
0521-1900.10	D-wall Panel N71	12	03-Sep-13	16-Sep-13	D-wall Panel N71																
0521-1900.20	D-wall Panel N74	9	17-Sep-13	27-Sep-13	D-wall Panel N74																
0521-1900.15	D-wall Panel N72	12	03-Oct-13	17-Oct-13	D-wall Panel N72																
0521-1900.30	D-wall Panel N73	12	18-Oct-13	31-Oct-13	D-wall Panel N73																
0521-2140	D-wall S78-S79 Pre-treatment	0	06-Aug-13 A	13-Aug-13 A	D-wall S78-S79 Pre-treatment																
0521-2215	D-wall S78-S79 Guide Wall	6	20-Aug-13	26-Aug-13	D-wall S78-S79 Guide Wall																
0521-2145.10	D-wall Panel S79	12	27-Aug-13	09-Sep-13	D-wall Panel S79																
0521-2145.15	D-wall Panel S78	12	25-Sep-13	09-Oct-13	D-wall Panel S78																
0521-2165	Install Dewatering Well - Ch 4932-5149 (10 nos.)	12	25-Oct-13	07-Nov-13	Install Dewatering Well - Ch 4932-5149 (10 nos.)																
0521-2166	Install Observation Well - Ch 4932-5149 (6 nos.)	12	29-Oct-13	11-Nov-13	Install Observation Well - Ch 4932-5149 (6 nos.)																
0521-2167	Install Recharging Well - Ch 4932-5149 (2 nos.)	6	05-Nov-13	11-Nov-13	Install Recharging Well - Ch 4932-5149 (2 nos.)																

- Remaining Level of Effort
- Actual Level of Effort
- Actual Work
- Remaining Work
- Critical Remaining Work
- ◆ Milestone

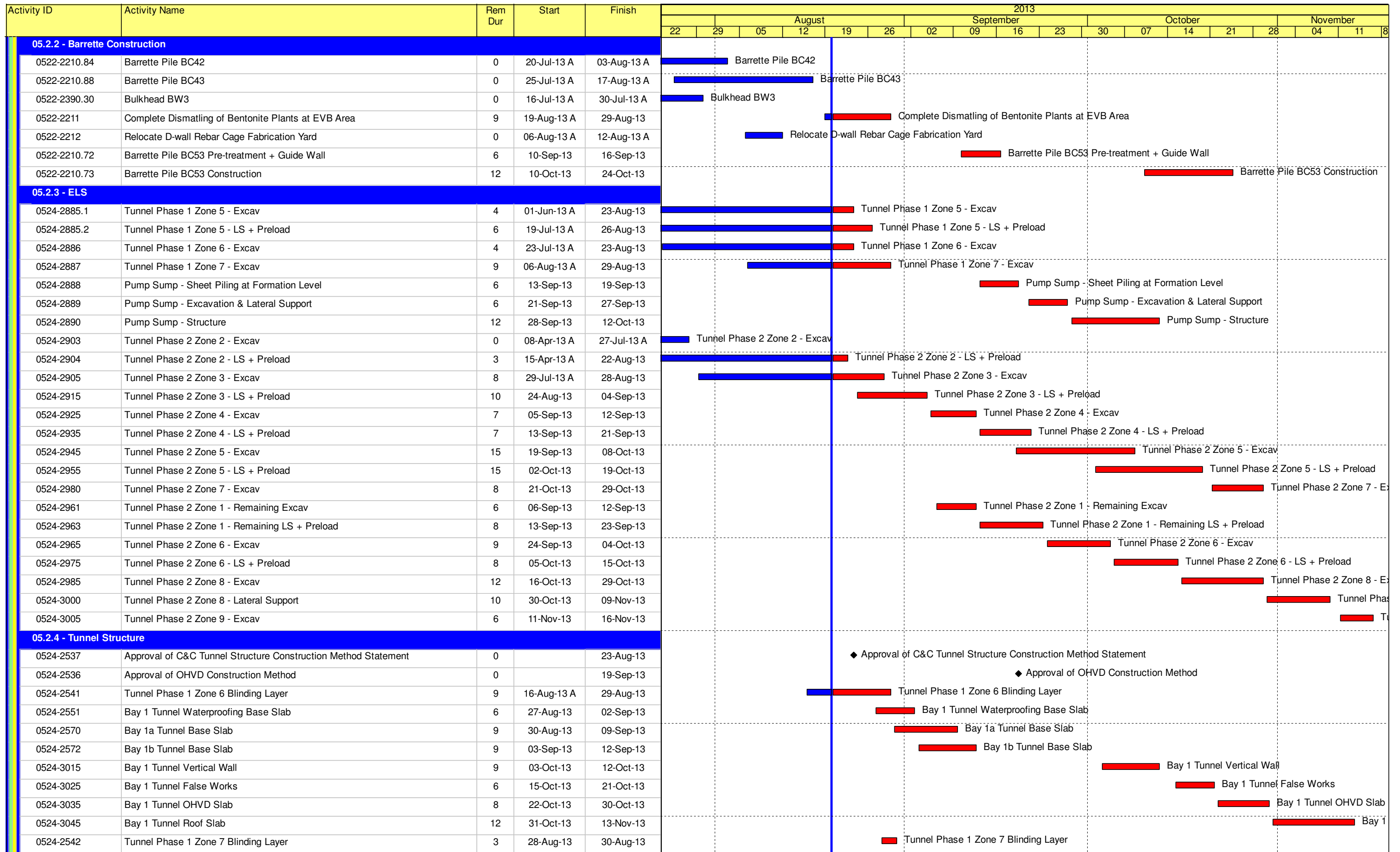
Contract HY/2009/19

Three Month Rolling Programme (20 Aug 2013 to 19 Nov 2013)

3MRP

3MRP - Aug 2013 to Nov 2013

Page 2 of 8



- Remaining Level of Effort
- Actual Level of Effort
- Actual Work
- Remaining Work
- Critical Remaining Work
- ◆ Milestone

Contract HY/2009/19

Three Month Rolling Programme (20 Aug 2013 to 19 Nov 2013)

3MRP

3MRP - Aug 2013 to Nov 2013

Activity ID	Activity Name	Rem Dur	Start	Finish	2013																
					August					September					October				November		
					22	29	05	12	19	26	02	09	16	23	30	07	14	21	28	04	11
0620-2620	1500mm Drainage MH 1-42 to 1-43 - Sheet Piling	6	27-Aug-13	02-Sep-13																	
0620-2630	1500mm Drainage MH 1-42 to 1-43 - Excavation	7	06-Sep-13	13-Sep-13																	
0620-2640	1500mm Drainage MH 1-42 to 1-43 - Pipe Laying	5	14-Sep-13	19-Sep-13																	
0620-2650	1500mm Drainage Construct MH 1-42	12	21-Sep-13	05-Oct-13																	
0620-2660	1500mm Drainage MH 1-42 to 1-43 - Backfill + Extract Sheet Pile	9	07-Oct-13	17-Oct-13																	
06.3 - Admin Building																					
0630-3100	Predrill for Adm Building (55 no) (4 set)	54	18-Oct-13	19-Dec-13																	
10 - SECTION X OF THE WORKS																					
10.1 - E/B Bridges (Bridge D, E and F)																					
10.1.1 - Marine Pier Construction																					
Pier F03 to F15																					
1011-2170	F3 Crosshead Construction	0	01-Jun-13 A	25-Jul-13 A																	
1011-2175	Bearing intallation Pier F3	12	16-Sep-13*	30-Sep-13																	
1011-2200	F4 Crosshead Construction	9	18-Jun-13 A	29-Aug-13																	
1011-2205	Bearing intallation Pier F4	12	24-Sep-13	08-Oct-13																	
1011-2230	F5 Crosshead Construction	1	13-May-13 A	20-Aug-13																	
1011-2235	Bearing intallation Pier F5	12	02-Oct-13	16-Oct-13																	
1011-2245	F6 Pile Cap Construction	0	13-May-13 A	05-Aug-13 A																	
1011-2250	F6 Pier/Column Construction	2	06-Aug-13 A	21-Aug-13																	
1011-2260	F6 Crosshead Construction	24	22-Aug-13	18-Sep-13																	
1011-2261	Bearing intallation Pier F6	12	09-Oct-13	23-Oct-13																	
1011-2275	F7 Pile Cap Construction	8	20-Jun-13 A	28-Aug-13																	
1011-2280	F7 Pier/Column Construction	12	29-Aug-13	11-Sep-13																	
1011-2290	F7 Crosshead Construction	24	19-Sep-13	19-Oct-13																	
1011-2291	Bearing intallation Pier F7	12	28-Oct-13	09-Nov-13																	
1011-2300	F8 Pile Cap Shutter Cofferdam	0	10-Jun-13 A	03-Aug-13 A																	
1011-2305	F8 Pile Cap Construction	15	05-Aug-13 A	05-Sep-13																	
1011-2310	F8 Pier/Column Construction	12	06-Sep-13	19-Sep-13																	
1011-2320	F8 Crosshead Construction	24	21-Sep-13	21-Oct-13																	
1011-2345	Bearing intallation Pier F8	12	04-Nov-13	16-Nov-13																	
1011-2380	F9 Pile Cap Shutter Cofferdam	12	29-Jul-13 A	02-Sep-13																	
1011-3115	F9 Pile Cap Construction	18	03-Sep-13	24-Sep-13																	
1011-2390	F9 Pier/Column Construction	12	25-Sep-13	09-Oct-13																	
1011-2410	F10 Pile Cap Shutter Cofferdam	18	23-Aug-13	12-Sep-13																	
1011-3125	F10 Pile Cap Construction	18	13-Sep-13	05-Oct-13																	
1011-2420	F10 Pier/Column Construction	12	07-Oct-13	21-Oct-13																	
1011-2350	F11 Pile Cap Shutter Cofferdam	18	06-Sep-13	27-Sep-13																	
1011-3135	F11 Pile Cap Construction	18	28-Sep-13	21-Oct-13																	
1011-2360	F11 Pier/Column Construction	12	22-Oct-13	04-Nov-13																	
1011-2370	F11 Crosshead Construction	24	05-Nov-13	02-Dec-13																	
1011-2075	F12 Dismantle Piling Platform	2	05-Aug-13 A	21-Aug-13																	
1011-2440	F12 Pile Cap Shutter Cofferdam	18	21-Sep-13*	12-Oct-13																	
1011-3145	F12 Pile Cap Construction	18	15-Oct-13*	04-Nov-13																	
1011-2450	F12 Pier/Column Construction	12	05-Nov-13	18-Nov-13																	

- Remaining Level of Effort
- Actual Level of Effort
- Actual Work
- Remaining Work
- Critical Remaining Work
- ◆ Milestone

Contract HY/2009/19

Three Month Rolling Programme (20 Aug 2013 to 19 Nov 2013)

3MRP

3MRP - Aug 2013 to Nov 2013

Page 5 of 8

Activity ID	Activity Name	Rem Dur	Start	Finish	2013																
					August					September				October				November			
					22	29	05	12	19	26	02	09	16	23	30	07	14	21	28	04	11
1051-1016	Temporary Bridge TA1 - Bridge Steel Frame Structure	18	02-Sep-13	23-Sep-13																	
1051-1017	Temporary Bridge TA1 - Bridge Decking + Tie-in to Existing HFSR	12	24-Sep-13	08-Oct-13																	
1051-1018	Temporary Bridge TA1 - Parapet	12	09-Oct-13	23-Oct-13																	
10.6 - Tunnel Approach Ramp																					
10.6.1 - Approach Ramp (Excluding Portion IIB)																					
Bored Piles																					
1061-1570	Bored Pile Ramp - BN02	2	16-Jul-13 A	21-Aug-13																	
1061-1580	Bored Pile Ramp - BN01	18	05-Oct-13	26-Oct-13																	
1061-1590	Bored Pile Ramp - BN013	18	28-Oct-13	16-Nov-13																	
1061-1630	Bored Pile Ramp - BM46	0	12-Jul-13 A	27-Jul-13 A																	
1061-1640	Bored Pile Ramp - BM45	3	29-Jul-13 A	22-Aug-13																	
1061-1670	Remaining Pre-drilling for Approach Ramp Bored Piles	56	19-Jul-13 A	26-Oct-13																	
1061-1650	Bored Pile Ramp - BM44	18	23-Aug-13	12-Sep-13																	
1061-1660	Bored Pile Ramp - BM43	18	13-Sep-13	05-Oct-13																	

- █ Remaining Level of Effort
- █ Actual Level of Effort
- █ Actual Work
- █ Remaining Work
- █ Critical Remaining Work
- ◆ Milestone

Contract HY/2009/19

Three Month Rolling Programme (20 Aug 2013 to 19 Nov 2013)

3MRP

3MRP - Aug 2013 to Nov 2013

Page 8 of 8

